

MARS  
CARAVANS



# MARS 15 ELITE

MK II

\$62,000

+On-road Costs & Dealer Delivery



Finance Options Available from  
**\$232 /** per week



June 2025

15 FT. OFF ROAD FAMILY POP-TOP HYBRID CARAVAN









Experience the freedom of the open road without ever leaving the comforts of home. The **Mars 15 Elite MKII** isn't just a hybrid caravan — it's your private sanctuary on wheels. Designed for those who crave elegance as much as exploration, this stunning van blends rugged off-road capability with an interior crafted for indulgence.

From the moment you step inside, you're welcomed by refined finishes, ambient lighting, and thoughtful design details that elevate every journey. Whether you're sipping your morning coffee by a coastal sunrise or unwinding after a day of discovery, the **15 Elite MKII** ensures every moment feels effortless — and beautifully yours.

*Adventure never looked, or felt, so luxurious.*



”

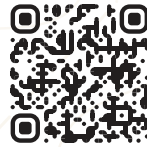
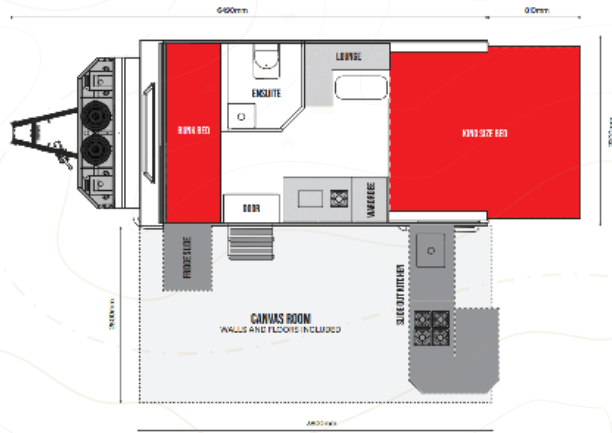
Buying my **Mars 15 Elite** was such a great experience! Everything went super smoothly, and the team was awesome — friendly, helpful, and really knew their stuff. The van itself is even better than I imagined. I'm so excited to hit the road and start exploring. This thing is freedom on wheels — easily one of the best purchases I've ever made!

★★★★★ **Jo L.** - Google Review Customer

”



# SPECIFICATION



Want to See  
More Specifications?

## FRAME/EXTERNAL



Length	6990mm
Width	2200mm
Height	2710mm
Axles	Single Axle
Tare Weight	+ - 2480kg (depending on options)
Ball Weight	+ - 220kg
ATM	3000kg
Chassis Construction	120 x 50 x 3mm
Body Construction	Premium Aluminum frame and alloy composite sheet
Tyres	2x 265/75 R16 MT tyres
Main Bed	Inner spring King size bed
Bunks	2x Large Bunk Beds

## MECHANICAL



Coupling	3.5T Cruisemaster DO35 Hitch
Brakes	12" Electric
Suspension	Pedders Suspension and Shocks
Safety Chains	Stamped Chains ADR 62 Aus Standards
Hand Brake	Self locking hand brake
Jockey Wheel	ARK 750 10" Heavy Duty
Awning	4.5M Water proof awning
External Shower	Hot and cold shower with drop down curtain
Anderson Plug	50A Anderson plug included

## FEATURES / ELECTRICAL

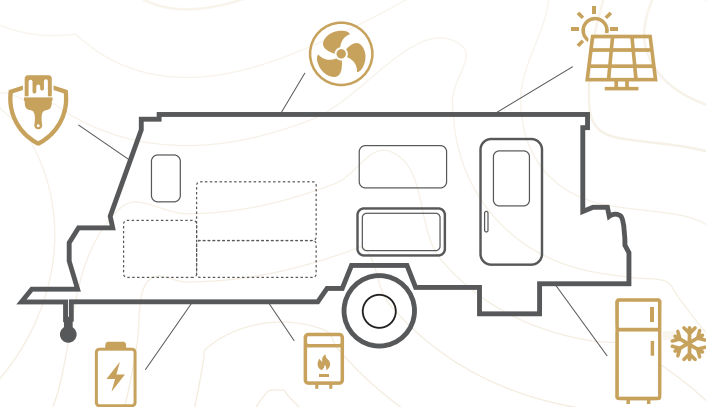


Batteries	400 AH Lithium
Inverter	2000W Enerdrive inverter
Battery Management System	Projecta PM435 BMS
Solar	600W Solar
Water Tank	2 x 120 L Fresh water / 75L GREY
Fans	Full Gimbal Ranger fans
Air Conditioner	Reverse Cycle heating and cooling
TV	TV options available
Reverse Camera	Full HD reverse camera with monitor
Speakers and radio	Fusion entertainment system with waterproof speakers
Kitchen	Stainless steel internal and external kitchen
External Shower	Hot and cold shower with drop down curtain
Battery Charger	50 AH DC to DC

# MAKE IT YOURS AT NO EXTRA COST

Your journey is unique — and your camper should be too. The **Mars 15 Premium MKII** is **fully customisable** and our designs are adaptable to your camping needs. From layout tweaks to personalised touches, we give you the freedom to design a van that feels truly yours.

**ENHANCE YOUR CAMPING EXPERIENCE THROUGH  
OUR ADDITIONAL ADD ONS!**



For a full list of all compatible additional accessories, please refer to the link.

<https://marscampers.com.au/optional-extras/>

From tech upgrades to added comforts, customise your camper your way.





# WARRANTY / ROADSIDE ASSIST

Whether you're off the beaten track or cruising the open highway, you can rest assured knowing that your new Mars Campers' camper, hybrid, or caravan is covered by the Mars Campers New Vehicle Warranty.

Mars Campers New Vehicle Warranty promises to offer **12 months/unlimited-kilometre manufacturing warranty**, and **3-year structural warranty** coverage. Our warranty provides added peace of mind for our travelling customers.



ADDITIONAL WARRANTY (INTEGRITY PARTNER) - \$3000
3 years unlimited roadside assist including towing
3 years manufacturers warranty
Accommodation expenses
Food and perishables expenses



**Find out More About Warranty!**

Read what's included in the warranty package  
<https://marscampers.com.au/warranty-terms-and-conditions/>  
If you have any further questions relating to warranties please scan the code.







**ARK**  
INNOVATION, NOT IMITATION

**A**  
aufocus

**CRUISE  
MASTER**

**DOMETIC**

**ENERDRIVE**

**EVAKOOL**

**FUSION**

**PEDDERS**  
SUSPENSION & BRAKES

**PROJECTA**

**RENOGY**

**SEAFLO**

**truma**



*“Your journey begins from...here”*



2024  
BEST HYBRID  
OF THE YEAR  
FINALIST



2024  
CIAA BEST STAND  
AWARD



2019  
HYBRID CAMPER  
OF THE YEAR



2018  
HYBRID CAMPER  
OF THE YEAR

#### MELBOURNE (HQ)

65 Abbott Road,  
Hallam, VIC 3803

#### SYDNEY

579 Woodville Road,  
Guildford, NSW 2161

#### BRISBANE

81 Kelliher Road,  
Richlands, QLD 4077

#### PERTH

6 Alex Wood  
Dr, Forrestdale WA 6112

#### ADELAIDE

65 Wingfield Rd,  
Wingfield SA 5013

#### CABOOLTURE

23-25 Learjet Drive,  
Caboolture, QLD 4510

The information presented in this brochure is for general guidance only and is subject to change without prior notice. All specifications, features, images, website links, and QR codes are accurate at the time of publication; however, Mars Campers continuously updates and improves its products. As a result, actual product details, design, functionality, and features may differ at the time of purchase.

Prospective buyers are strongly advised to consult an authorised Mars Campers representative to confirm current product specifications and ensure suitability for their specific requirements. Mars Campers does not accept any liability for reliance on the information contained herein.