

# MARS 15 MK III

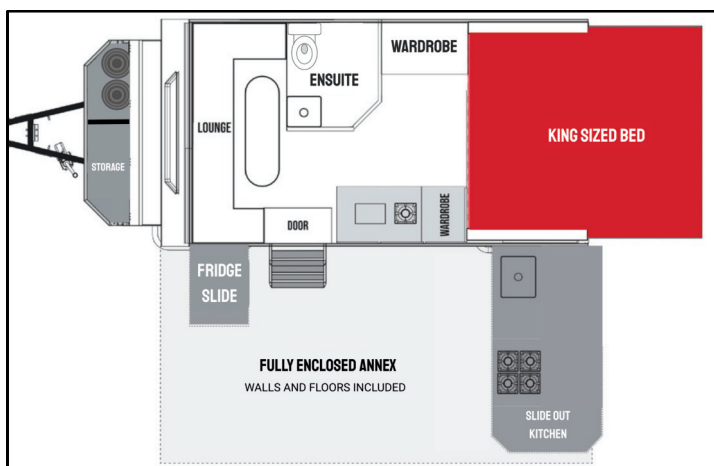
## PREMIUM



Finance options available.  
Scan for more information.



### 15 FT. OFF ROAD COUPLES CARAVAN



#### MECHANICAL

|                      |  |
|----------------------|--|
| <b>Coupling</b>      | 3.5T Cruisemaster DO35                               |
| <b>Brakes</b>        | 12" Electric   |
| <b>Suspension</b>    | Independent Coil-sprung Suspension w/ Pedders Shocks |
| <b>Safety Chains</b> | Stamped Chains ADR 62 Aus Standards                  |
| <b>Hand Brake</b>    | Self Locking Hand brake                              |
| <b>Jockey Wheel</b>  | ARK XO 750 10" Heavy Duty                            |
| <b>Awning</b>        | 4.5M Waterproof Electric Awning                      |
| <b>Anderson Plug</b> | 50A Anderson Plug Included                           |

#### FEATURES / ELECTRICAL

|                           |  |
|---------------------------|--|
| <b>Batteries</b>          | 600Ah Semi Solid Cell Lithium Batteries        |
| <b>Inverter</b>           | Renogy 3000W Inverter w/ 120Ah Battery Charger |
| <b>Battery Management</b> | Projecta PM 435                                |
| <b>Solar</b>              | 1020W Solar                                    |
| <b>Diesel Heater</b>      | AuFocus Diesel Heater                          |
| <b>Hot Water System</b>   | Instant Hot Water System Included              |
| <b>Water Tank</b>         | 2 x 120L Water Tanks / 75L Grey                |
| <b>Fans</b>               | 2 x Bedside Full Gimbal Ranger Fans            |
| <b>Air Conditioner</b>    | Offgrid Rooftop A/C                            |
| <b>TV</b>                 | 24" LED Smart TV w/ Removable Bracket          |
| <b>Speakers and Radio</b> | Fusion Entert. System / Radio                  |
| <b>Kitchen</b>            | Internal & External Kitchen                    |
| <b>External Shower</b>    | Shower Box & Shower Tent                       |
| <b>Battery Charger</b>    | DCDC 50Ah Battery Charger                      |
| <b>Roof</b>               | Electric Roof                                  |

#### FRAME/EXTERNAL

|                             |   |
|-----------------------------|---|
| <b>Length (Closed)</b>      | 6990mm  |
| <b>Width (Closed)</b>       | 2300mm  |
| <b>Height (Closed)</b>      | 2700mm  |
| <b>Axles</b>                | Single Axle                                     |
| <b>Tare Weight</b>          | + - 2500kg (depending on options)               |
| <b>Ball Weight</b>          | + - 200kg                                       |
| <b>ATM</b>                  | 3000kg  |
| <b>Chassis Construction</b> | 120 x 50 x 4mm                                  |
| <b>Drawbar Construction</b> | 150 x 50 x 4mm                                  |
| <b>Body</b>                 | Premium Aluminum Frame w/ Alloy Composite Sheet |
| <b>Tyres</b>                | 2 x 265/75 R16 All Terrain Tyres                |
| <b>Main Bed</b>             | Inner Spring King-sized Bed                     |



**MELBOURNE (HQ)**  
65 Abbott Road,  
Hallam, VIC 3803

**SYDNEY**  
579 Woodville Road,  
Guildford, NSW 2161

**BRISBANE**  
81 Kelliher Road,  
Richlands, QLD 4077

**PERTH**  
6 Alex Wood Dr,  
Forrestdale WA 6112

**ADELAIDE**  
65 Wingfield Rd,  
Wingfield SA 5013

**CABOOLTURE**  
23-25 Learjet Drive,  
Caboolture, QLD 4510

The information presented in this brochure is for general guidance only and is subject to change without prior notice. All specifications, features, images, website links, and QR codes are accurate at the time of publication; however, Mars Campers continuously updates and improves its products. As a result, actual product details, design, functionality, and features may differ at the time of purchase. Prospective buyers are strongly advised to consult an authorised Mars Campers representative to confirm current product specifications and ensure suitability for their specific requirements. Mars Campers does not accept any liability for reliance on the information contained herein.

## ELEVATE YOUR ADVENTURE

Designed for couples who love the open road, the Mars 15 Premium MKIII features a comfortable lounge and ample storage, making it ideal for extended adventures. With the MKIII upgrade offering an 800W solar panel and 600Ah battery system, you can stay off-grid longer and travel further with confidence. Built for relaxed living and long-haul touring, it's the perfect balance of comfort, practicality and freedom.



"Highly recommend Mars caravans! The quality, service, and attention to detail are outstanding. From start to finish, the whole experience was smooth and professional. If you're looking for a reliable caravan and a great team to back it up, Mars is the way to go!"



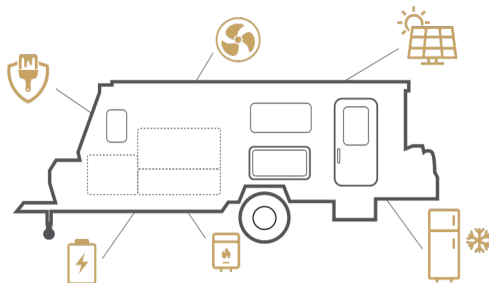
Michael Roberts - Google Review Customer



## MAKE IT YOURS AT NO EXTRA COST

Your journey is unique — and your camper should be too. The Mars 15 Premium MKIII is fully customisable and our designs are adaptable to your camping needs. From layout tweaks to personalised touches, we give you the freedom to design a van that feels truly yours.

ENHANCE YOUR CAMPING EXPERIENCE THROUGH  
OUR ADDITIONAL ADD ONS!



For a full list of all compatible additional accessories, please refer to the link.  
<https://marscampers.com.au/optional-extras/>

From tech upgrades to added comforts, customise your camper your way.



## WARRANTY / ROADSIDE ASSIST

Whether you're off the beaten track or cruising the open highway, you can travel with confidence knowing your new Mars Caravan is covered by the Mars Caravans New Vehicle Warranty. The warranty includes a 12-month unlimited-kilometre manufacturing warranty and a 5-year structural warranty. You also have the option to add the Integrity Partner Warranty for an additional 3 years of coverage.



ADDITIONAL WARRANTY  
(INTEGRITY PARTNER) - \$3000

3 years unlimited roadside assist including towing

3 years manufacturers warranty

Accommodation expenses

Food and perishables expenses

